

**Friday 23<sup>rd</sup> March 2018**

## dates for your diary

### 26<sup>TH</sup> – 30<sup>TH</sup> MARCH

World Autism Awareness Week.

### MONDAY 26<sup>TH</sup> MARCH

Behaviour Reward Trip – Group 1  
Legoland

### WEDNESDAY 28<sup>TH</sup> MARCH

Easter Service\* (pupils, students, and staff only). *\*has been moved from Thurs 29<sup>th</sup>*

Behaviour Reward Trip – Group 2  
Legoland

### THURSDAY 29<sup>TH</sup> MARCH

Last Day of Term

12:30 – 1:30pm - Family Forum (please sign in at front office)

1:30 – 2:30pm - Easter Fayre  
Parents welcome (and you can take your children home afterwards).

### 30<sup>TH</sup> MARCH – 13<sup>TH</sup> APRIL Inclusive

EASTER HOLIDAYS

### 18<sup>th</sup> + 19<sup>th</sup> APRIL

Behaviour Reward Trip – 2 dates  
Laser Quest – DETAILS WILL BE EMAILED TO PARENTS on Monday.

### FRIDAY 20<sup>TH</sup> APRIL

Year 8 Parents Afternoon – 2.30-4pm

### FRIDAY 27<sup>TH</sup> APRIL

Sixth Form parents – 2.30-4pm

## Positive Slips

*Congratulations*

This week's winner is Kaylan in Year 8. Well done!



## Physical Education Stars of the Week

W/E 23<sup>rd</sup> March 2018

**Adam Elton, Olli Edwards, Louis Nicks, Ewan Dow &  
David Hoyle**

Excellent sportsmanship and contributions in class



## Book Day Winners 2018

Thank you to all students and pupils that went to so much effort with costumes on World Book Day and have really raised the bar. Winners are: -

### Key Stage 2

1<sup>st</sup> Henry Homewood  
2<sup>nd</sup> Callum Burns  
3<sup>rd</sup> Peter Short

### Key Stage 3

1<sup>st</sup> Matthew Hedges  
2<sup>nd</sup> Toby Dudley  
3<sup>rd</sup> Lewis Kemp

### Key Stage 4

1<sup>st</sup> Louis Nicks  
2<sup>nd</sup> Noah Dinnin  
3<sup>rd</sup> Tyrese Gurney

### Key Stage 5

1<sup>st</sup> Russell Cooper  
2<sup>nd</sup> Matthew Creigh  
3<sup>rd</sup> Navid Labbani

Photos will be in next week's Flyer



We are very happy with everything the school does for our son and us as a family. We feel privileged to have a place for our son at St Dominic's

# Forest School

Can you identify the tracks we found in the woods this week?



The National  
Autistic Society

On the 7<sup>th</sup> and 8<sup>th</sup> of March 2018 members of St Dominic's staff attended the National Autism Conference in Harrogate. This is conference that is run by the National Autistic Society (NAS) and aims to provide information and up to date research into what is best practice when supporting children and adults with Autism. The NAS firmly believe "nothing about us, without us" and therefore the conference is open not just to professionals but also adults with Autism and families. The conference is sponsored by Axis Education and they ran a competition to win a £50 voucher. We are delighted to announce that St Dominic's School won and we look forward to spending the money on resources for the therapy department. We could hardly believe that we won out of all the delegates that attend (especially as we also won last year!).



# St Dominic's School

## Social Communication Programme

### **WHAT DO I NEED?**

The target is to encourage pupils to be more independent by:-

- Having the right equipment ready at the start of a lesson or activity
- Having the skills to check what they will need.

### **Facts re ASD**

Poor executive functioning affects the ability to organise, plan and manage tasks, manage their time and prioritise tasks:-

- Many pupils have poor organisational skills
- They are often unable to predict what they will need for an activity
- They do not easily infer what they need from previous experience
- They might not make use of strategies to help themselves, such as looking around at other pupils.

### **Suggested Script**

- What do I need? For this lesson you will need x, y, z
- What do I need? If you haven't got xxxx then you know where it is kept. Please get one now
- What do I need? We are using rulers to draw straight lines. Let a member of staff know if you haven't got everything you need for the lesson
- What do I need? Make sure your workspace is tidy because it will make it easier for you to work.

### **Hints and Tips**

- Prompt pupils to check what s/he needs at the start of each lesson
- Offer support by using visual reminders and verbal reminders about the equipment needed
- Encourage the pupils to lay their equipment out neatly on their desk/table so that they can access it easily
- Prompt pupils to check what s/he needs at the start of each lesson
- Offer support by using visual and verbal reminders about the equipment needed
- Encourage the pupils to lay their equipment out neatly on their desk/table so that they can access it easily.

## **BRAIN DETECTIVES WANTED!**

The Centre for Research in Autism and Education (CRAE) at UCL is looking for teens with and without autism to take part in their Brain Detectives sessions.

Brain Detectives is a free, four-hour workshop in central London that gives 12-18 year olds a chance to engage in real scientific research projects, learn about the working of the human brain and speak to brain scientists about their work.

The upcoming Brain Detectives workshops are due to take place in the Easter school holidays this April and welcome autistic and non-autistic young people. Parents or the young people themselves are invited to book a ticket online via Eventbrite to a workshop, ensuring they have read the accompanying information letter

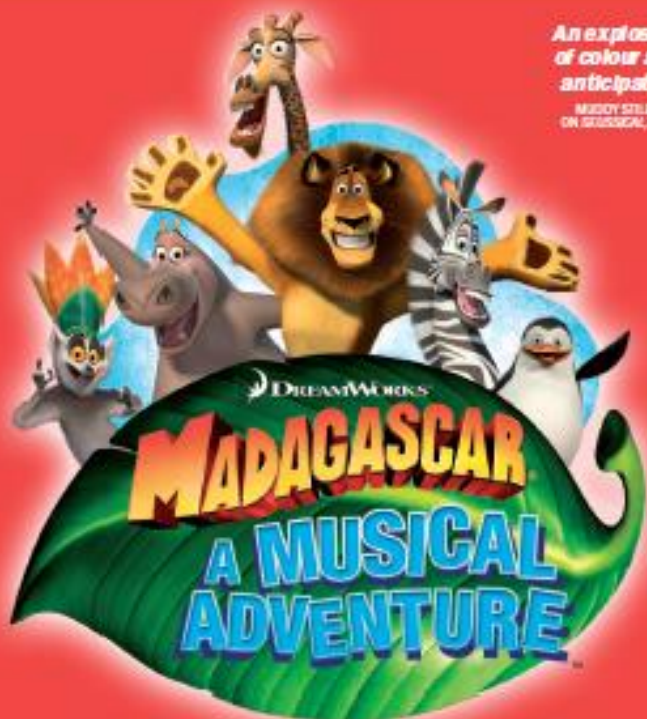
([https://www.autismresearchcentre.net/docs/Brain\\_Detectives\\_PIS.pdf](https://www.autismresearchcentre.net/docs/Brain_Detectives_PIS.pdf)). Upon completing their booking, participants may be contacted by one of the Brain Detectives team to confirm their attendance and other booking information.

Further details can be found at [https://www.autismresearchcentre.net/docs/Brain\\_Detectives\\_PIS.pdf](https://www.autismresearchcentre.net/docs/Brain_Detectives_PIS.pdf) If you would like to take part in our upcoming Brain Detectives, follow the eventbrite link to book your place <https://www.eventbrite.co.uk/e/brain-detectives-easter-2018-tickets-43193474846>

### Menu for week beginning **Monday 26<sup>th</sup> March 2018**

MENU	MONDAY	TUESDAY	WEDNESDAY	THURSDAY	FRIDAY
BREAKFAST					
MORNING SNACK	Fresh Fruit	Vanilla Cookies	Fresh Fruit	Chocolate Crunch	
LUNCH	Minced Beef Balti  <b>Vegetable Balti</b>  Braised Rice Jacket Potatoes Mixed Vegetables Leeks  Fresh Salad Bar Egg Mayo	Chicken & Pasta Bake  <b>Chick Pea, Vegetable Ragout</b>  New Potatoes Jacket Potato  Sliced Green Beans Cauliflower  Fresh Salad Bar Sliced Cheese	Roast Turkey Breast & Stuffing  <b>Mushroom Pilaf</b>  Roast Potatoes Jacket Potato  Braised Red Cabbage Mashed Swede  Fresh Salad Bar Ham	Beef Casserole  <b>Diced Quorn Vegetable Stew</b>  Mashed Potatoes Jacket Potato  Peas Sweetcorn  Fresh Salad Bar	<b>G O O D  F R I D A Y</b>
DESSERT	Peach Crumble & Custard Fresh Fruit Basket Yogurt	Rice Pudding & Jam  Fresh Fruit Basket Yogurt	Jam Tart & Cream  Fresh Fruit Basket Yogurt	Various Sponges & Custard  Fresh Fruit Basket Yogurt	
AFTERNOON SNACK	Fruit Buns	Lemon & Mango Loaf	Shortbreads		
SUPPER	Shepherd's Pie Vegetables	Sausage Roll Chips Spaghetti Hoops	Beef Pie Vegetables Potatoes		

A SOUTH HILL PARK PRODUCTION



*An explosion  
of colour and  
anticipation*

MUSICAL STYLING  
ON *SOUSSECAL*, 2017

BASED ON THE DREAMWORKS ANIMATION MOTION PICTURE

ORIGINAL MUSIC AND LYRICS BY  
**GEORGE NORIEGA & JOEL SOMEILLAN**

BOOK BY **KEVIN DEL AGUILA**

This smaller production is awarded by agreement with Music Theatre International (USA).  
All author and performance materials are also licensed by MTI License. www.mti.com/us/uk

**Wed 11 – Sun 15 April 2018**

**Wild Theatre, South Hill Park, Bracknell RG12 7PA**

**BOX OFFICE 01344 484123 - SOUTHILLPARK.ORG.UK**

**@SOUTHILLPARK /SOUTHILLPARKARTSCENTRE**

**Wed 11 – Sun 15 April**

**Wed 12noon  
(relaxed performance)\***

**Wed 4pm**

**Thu & Sat 12noon, 4pm & 7.30pm**

**Fri 12noon & 7pm**

**Sun 12noon & 4pm**

**Wild Theatre**

Recommended 2yrs+

£14.50 – £20.50\*

Concessions available

Special rates for families

Director **Mark Hooper**

Musical Director **Tim Cumpor**

Set Designer **Victoria Spearing**

Choreographer **Charlotte Steele**

\*From 1 Jan 2018 tickets subject to a 50p  
per ticket booking fee up to a max of £2,  
excluding schools and members.



South Hill Park Trust Limited  
A charitable company  
limited by guarantee

**DreamWorks Madagascar – A Musical Adventure**

Join Alex the Lion, Marty the Zebra, Melman the Giraffe, Gloria the hip-hip Hippo and of course, those hilarious, plotting penguins as they bound onto the stage in the musical adventure of a lifetime.

Based on the smash hit DreamWorks animated motion picture, *Madagascar – A Musical Adventure* follows all of your favourite characters as they escape from their home in New York's Central Park Zoo and find themselves on an unexpected journey to the madcap world of King Julien's Madagascar.

Filled with outlandish characters, adventures galore and an uplifting score, *Madagascar* will leave audiences with no choice but to "Move it, Move it!"



From the creative team who brought you *Soussical*, 2017

# EASTER SCHOOL



Take a journey out of the zoo and onto the stage with your favourite crack-a-backin' friends from the blockbuster DreamWorks film *Madagascar*. This Easter, make magical memories, form life-long friendships and discover the joy of performance.

Help us to bring *Madagascar – A Musical Adventure* to life on the Wild Theatre stage this Easter.

The experience starts with five days of rehearsals where you will learn all of the musical numbers and dance sequences you need to perform in the show. During the technical and dress rehearsals, we piece together and combine the work of the adult and junior cast – and before we know it, it's showtime.

No experience necessary. Suitable for ages 7-17yrs.

**Easter School dates:  
Mon 2 – Sun 15 April**

For full dates and times,  
please visit our website:  
[southhillpark.org.uk/events/  
easter-school-2018/](http://southhillpark.org.uk/events/easter-school-2018/)  
**£185, Sibling £175**

See South Hill Park's website for full details



GRAYSHOTT  
POTTERY

School Road, Grayshott, Near Hindhead, GU26 6LR

## EASTER EVENTS

### Pottery Painting

Come along and give pottery painting a go

**Tues 3<sup>rd</sup> April and Wed 4<sup>th</sup> April**

Turn up any time during these time slots  
10am-1pm or 2pm – 4pm

No booking required

**From £4.50 per item**



### Pottery Throwing

Throw a piece of pottery on a traditional potter's wheel

**Thurs 5<sup>th</sup> and Fri 6<sup>th</sup> April**  
**Mon 9<sup>th</sup>, Tues 10<sup>th</sup> and Wed 11<sup>th</sup> April**

10am to 4pm (30 minute booking slots)

**£15 per person, per slot**

Includes one piece glazed & fired

### Pottery Plaque Making

A fun pottery workshop to create your own plaque

**Thurs 12<sup>th</sup> and Fri 13<sup>th</sup> April**

10am to 4pm (30 minute booking slots)

**£15 per person, per slot**

Includes one piece glazed and fired



Events are open to adults and children | All under 16s to be accompanied by an adult please

Visit our website for more information on all our events  
[www.grayshottpottery.com](http://www.grayshottpottery.com) or call to book 01428 604404



## Great British Woodshop Easter Holiday Workshops, West Byfleet

Maximum of 6 children per class.

Learning and making with the Great British Woodshop

For 11-14 year olds

5<sup>th</sup> April – Propellor Clock

10.30am – 3.00pm (2 places remaining)

Make a propeller with an inserted clock to hang on your bedroom wall.

You will be using a fret saw, sanders, spoke shaves and a variety of other tools under supervision. You will learn to mark and measure. £60 per place



6<sup>th</sup> April – Wooden Lego Minifigure or Collection Display

10.30am – 3.00pm

Looking for a way to display your Lego minifigures or collection? Why not build your own display?

£60 per place

12<sup>th</sup> April – Wooden Head Phone Holder 10.00am-12.00pm

You will be shaping, sanding and will use a scroll saw and hand tools under supervision.

£25 per place

For 9-14 year olds

13<sup>th</sup> April – Parent and child session – Bird House

10-12.30pm (1 place remaining)

You will learn marking, measuring, drilling and to use fasteners, tools and select timber.

£30 per child



23<sup>rd</sup> June – Parent and child session – Pencil Holder with compartment.

10am-12.30pm

You will learn to mark, measure, select timber and to use fixings, fastenings and hand tools. £30 per child

To book please see [www.greatbritishwoodshop.co.uk](http://www.greatbritishwoodshop.co.uk) (scroll to the bottom of the courses page) or contact [kirsty@greatbritishwoodshop.co.uk](mailto:kirsty@greatbritishwoodshop.co.uk)